

# Marc Brandt Park Infiltration Basins Project

## Project Overview

The City of Santa Fe is exploring the redesign of Marc Brandt Park as a more resilient, multi-functional green corridor that better manages stormwater while supporting community use. The intention of this project is to integrate green stormwater infrastructure (GSI) with park improvements, such as enhanced landscaping, improved trails, and drainage features that support long-term watershed health. Bio-infiltration basins are one potential approach to help reduce flooding and erosion, improve water quality, and protect downstream infrastructure.

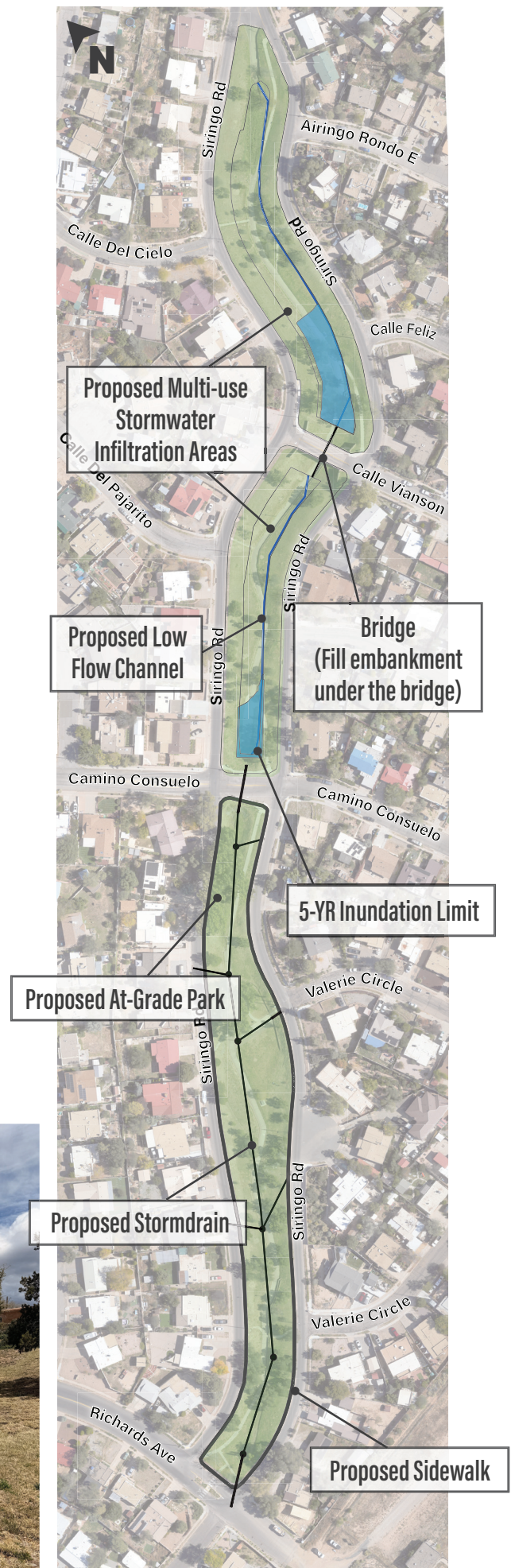
## Why This Project Matters

The current configuration of the park creates several challenges during snow melt and rain events, which can lead to:

- ◆ Unusable trail area at the bottom of the park
- ◆ Flooding and erosion
- ◆ Impacts to nearby homes and streets
- ◆ Strain on downstream drainage systems and arroyos

This project aims to provide a long-term, nature-based solution that improves both park function and neighborhood resilience while improving water quality.

## EXISTING CONDITIONS



## Proposed Improvements

### PARK FEATURES

- ◆ 2.2 acres of at-grade open space
- ◆ Improved landscaping using native and drought-tolerant plantings
- ◆ Enhanced accessibility and pedestrian connections
- ◆ Incorporation of artistic elements
- ◆ A design that maintains the park as a functional, usable community space

### STORMWATER IMPROVEMENTS

- ◆ New multi-use infiltration areas to manage stormwater during rain events
- ◆ Improved drainage patterns to safely capture and convey water
- ◆ Reduced flooding within the vicinity
- ◆ Attenuation of peak flows to the downstream arroyo

## Project Timeline

### 2026 Ongoing

#### ANALYSIS & MODELING:

Assessing existing and proposed stormwater conditions

### Spring 2026

#### CONCEPT DESIGN:

Developing and refining design approaches

#### COMMUNITY INPUT:

Public meeting and feedback collection

### Summer 2026

#### PRELIMINARY DESIGN:

Incorporating feedback into draft plans

### Fall/Winter 2026

#### FINAL DESIGN:

Preparing construction-ready plans

## Get Involved

Your input will help **shape the design of Marc Brandt Park.**



**Share** your ideas for park features, layout, and usability



**Review** design concepts and provide feedback



**Connect** with the project team to ask questions and share input

## For more information, contact:



Emily Engelbart,  
Emily.Engelbart@wsp.com



CITY OF SANTA FE  
**PARKS & OPEN SPACE**